

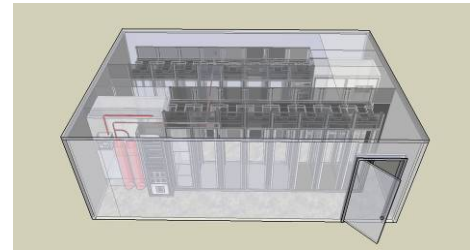
## Description

The SMART SHELTER+ is the latest generation of secure, modular, IT Security Rooms by AST.

The SS+ is possibly, one of the most secure IT rooms developed to date, result of the wide experience and R&D developed throughout the deployment of over 400 Smart Shelter rooms in the last years.

SS+ provides unique advantages in terms of security, fast deployment, and modularity ensuring perfect environmental conditions for mission-critical IT equipment.

SS+ is ideal for Data Center applications (Corporate, Government, Authorities, etc...) and Communications' rooms.



## Main Benefits

- Ultra-fast deployment: standardized, pre-assembled components.
- Expandable room: can be easily expanded as per IT growth requirements.
- Single point of contact for the customer: proved product and concept. No surprises!
- Can be placed almost anywhere: inside existing rooms, office areas, factories, warehouses, parking lots, open field,...
- Multiple applications and extended product life.
- Anti-vandalism protection.
- Fire Resistant and thermally stable to most demanding standards. Thermal isolation made of organic material, with fusion temp. > 3,632°F, non-toxic smoke release (safe for operators inside).
- Optimal cooling technology and minimum air losses as per extraordinary insulation.
- Water sealed.
- Flexibility: custom designs possible.
- Modular design allows to joint various SMART SHELTER together and create larger spaces.
- Easy to relocate.



Burned!



Safe inside!

## Applications

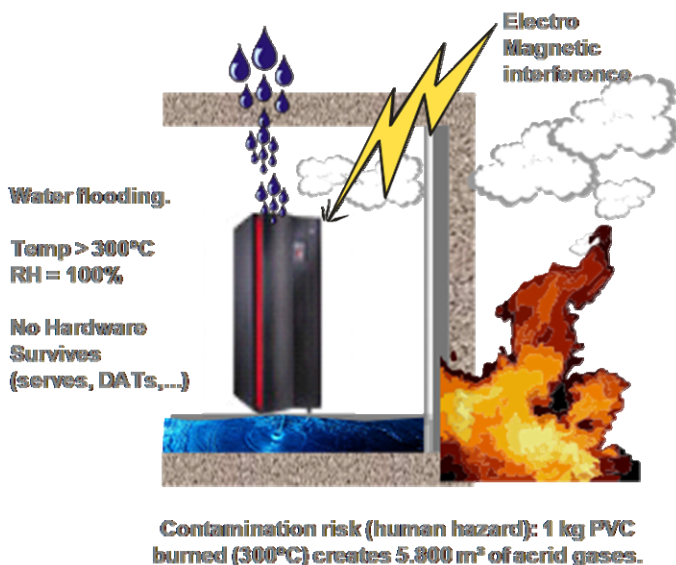
- Telecommunications exchanges (fix and wireless).
- Business Disaster Recovery Centers.
- Network centers.
- Corporate Data Centers.
- Public Safety networks.
- High Criticity Networks and Exchanges.
- Comms rooms
- Redundant Data Centers.
- Military
- Government
- Corporations
- Oil & Gas
- Public infrastructure
- Small & Medium Business

## Main Features

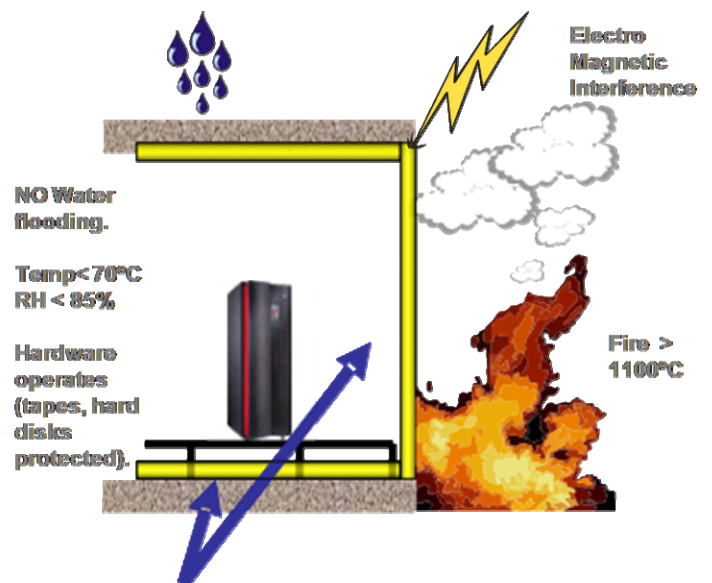
- Fire resistance , thermal stability and Relative Humidity performance, tested against fire-curve as established per EN1047-2 standard (acc. UL 72), certified by SGS, Swiss independent certification entity : ensures that, in case of fire, temp. inside the room remains below 92°F at 66% RH ensuring hardware, and magnetic support equipment survival.
- Excellent solution to match today's higher IT resiliency, and legal environment (SOX, Basel II, ANSI 942).
- IP X5 water and dust tight, certified.
- Electro-Magnetic shielded for EMI/RFI High Freq. 20dB and also Low Freq. Magnetic Field 10 dB.
- Burglary protection
- Allows maximum space utilization as room can adapt to any given room size.
- Corner panel system makes installation clean and fast.
- Unlimited shapes and dimensions include wide-span versions columns-free.
- Highly secure proprietary door design available in multiple sizes (single or double sheet).
- SS+ can be supplied also a turn-key solution, with all equipment requested to ensure the uncompromised resiliency of your IT infrastructure as per New ANSI 942 criteria.



### Conventional Data Centres



### SMART SHELTER



### SMART SHELTER Structure

No contamination (gas sealed).